

# record C 127

concealed automatic drive for swing doors



record C 127



**record**

your global partner for entrance solutions

# record C 127

concealed automatic drive for swing doors

## Brief Description

The record C 127 automatic swing door operator is a concealed pivot drive that can be mounted in the floor or within a ceiling cavity to allow building designers to provide a more stylish and functional automatic swing door entrance, free of overhead transoms or visible linkage arms which are necessary with more conventional swing door drives.

Due to its modular construction and its flexibility in adapting to a swing door, the record C 127 can be used for the most diverse applications. As it is quiet and has a high level of momentum, heavy doors weighing up to 400kg can be operated in ideal conditions.

## Components

The C 127 operator forms part of an electromechanical swing door system that comprises the following main components:

- control unit: intelligent, learning, microprocessor-controlled control system, enabling an extensive range of setup options.
- driving unit: low maintenance DC geared motor with electronic path measurement and integral thermostatic protective switch, powering a gearbox with an adjustable spring tension.
- power supply: Compact 230V power supply with integral input filter and over voltage protection.
- connection arm: power transmission to the door leaf by use of a standard cast stainless steel arm concealed in the bottom rail, or an external slide arm connected to a rail fixed to the back of the door.

## Installation Options

The key benefit of the C 127 operator is the flexibility in its design options to meet specific architectural requirements, with options including:

- in floor mounted with a surface fixed stainless steel cover plate
- in floor mounted with recessed floor insert to match surrounding.
- in floor mounted with slide arm connection (for hinged doors).
- ceiling cavity mounted with direct pivot connection.

## Power Mode Options

Every C 127 operator can be commissioned specifically to meet various design and project specific criteria, in particular the power mode setting:

- full power: ideal for larger door sizes or external applications in high wind areas. Requires the use of top rail infrared safety sensors to stop the door panel if there is an obstruction in the path of travel
- low energy: limits the kinetic energy to allow the door to be used safely without infrared sensors. Should the door make contact with an obstruction the force is within guidelines and the operator will automatically reverse before opening again at a reduced speed.

## Compliance

record C 127 operators meet the Building Code of Australia (BCA) requirements and are tested to stringent European standards DIN EN16005 (durability and safety).

record complies with the design, safety and functionality guidelines of the non-legislative Australian Standard AS5007:2007.

## Technical Specifications

Housing dimensions:	710mmL x 200mmW x 130mmD
Floor setback (from FFL):	143mm (stainless steel cover) 190mm (removable floor insert)
Operating voltage:	230 V AC 50 / 60 Hz
Power consumption:	13W in standby mode, 67W rated
Maximum torque:	50 Nm (standard) ; (80 Nm (heavy)
Maximum moment of inertia of the door leaf:	65kgm <sup>2</sup> (standard) ; 140kgm <sup>2</sup> (heavy)

### Adjustable parameters:

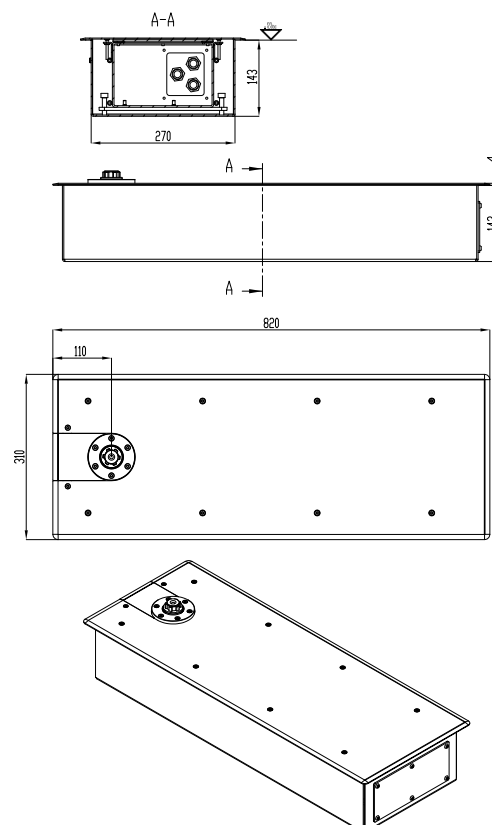
Angle of aperture:	Can be selected from 70° to 115°
Hold-open time:	Can be selected from 0 to 60 sec
Opening speed:	Can be selected from 3 to 20 sec
Closing speed:	Can be selected from 5 to 20 sec

### Operating conditions:

Ambient temperature:	- 15°C to + 50°C
Humidity range:	Up to 85%, non-condensing
Wind load:	Designed for wind load zone 2 (25 m/s)
Protection class:	IP 67

Although every effort is made to minimise the impregnation of dirt or moisture through the IP rating, it is recommended that installations of C 127 are avoided where either high pressure cleaning or constant saturation of still water may be evident.

## Drawings (with stainless steel cover)



→ record Automatic Doors Pty Ltd – [www.recorddoors.com.au](http://www.recorddoors.com.au)

Melbourne: 119 Metrolink Circuit, Campbellfield VIC 3061

Phone: +61 3 8339 2888 – 1300 804 438 – [infomelbourne@recorddoors.com.au](mailto:infomelbourne@recorddoors.com.au)

Sydney: 30 Prince William Drive, Seven Hills NSW 2147

Phone: +61 2 8811 4000 – 1800 674 408 – [infosydney@recorddoors.com.au](mailto:infosydney@recorddoors.com.au)